



SECURITY WITH VISIBILITY



ELEGANCE IN MERCHANDISING



- 3** PROTECT your assets and optimize space
- 2** SHIELD your products while providing visibility
- 1** SECURE your retail premises 24/7

RETAIL SECURITY CLOSURES

OPERATION

- Control effortlessly by paddle switch or key switch
- Commercial-grade construction, requires little maintenance
- Curtain stores in a compact coil, saving valuable space
- Engineered and tested to meet and exceed industry standards
- Operation by Jack Shaft Motor (customer supplied or included)
- Emergency egress and battery backup options are available

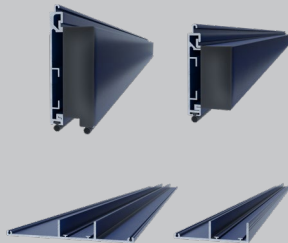
MATERIALS

- Provides excellent visibility, air flow and security
- Offers a clean, uncluttered view that helps promote your business even when closed
- Commercial grade aluminum - Environmentally friendly material with positive effects during production and operation
- Adds beauty to the interior and exterior of a building or storefront, with many different design configurations



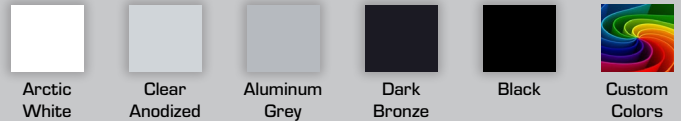
BOTTOM BAR OPTIONS

- 75 mm (3 in) or 100 mm (4 in) Heavy Duty Bottom Bar
- 75 mm (3 in) or 150 mm (6 in) bottom bar plates available
- Bottom bar plates cover the ceiling opening when the curtain is coiled up



FRAME & CURTAIN COLOR OPTIONS

- Not all series are available in all colors, contact your dealer for options
- Additional charge for dark bronze, black, and custom colors



SMALL PERFORATION



LARGE PERFORATION



CLEAR CURTAIN



BRICK PATTERN



STRAIGHT PATTERN



WINDOW OPENING



SHUTTER CURTAIN STYLES AND SIZING

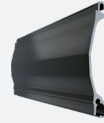
Pentagon EntrexGuard curtain styles are finished in industry leading coatings, and provide options for visibility. Our engineered slats provide enhanced security as well as adding to the visual appeal of your facility.



530 Series



535 Series



560 Series

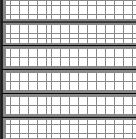
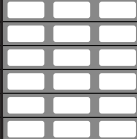


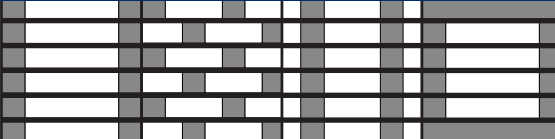
561 Series



562 Series

SOLID CURTAIN		
Description	560	
The EntrexGuard 560 series solid curtain provides a highly secure barrier as a retail security shutter system. It is strong and durable allowing it to stand up against vandalism and intruders, while not allowing light or air transfer. The 560 series provides optimum security, and still looks amazing due to the smooth and sleek design of the curtain.	Single wall extruded aluminum	

PERFORATED CURTAIN			
	Description	561	562
	The perforated curtain is available in both the 561 and the 562 series. The perforated curtain allows light transfer through the shutter curtain as well as optimal air flow. The small perforation option is designed to provide an unobstructed view through the shutter. The large perforation option gives you the look of a 'link and rod' grille door, with the advantage of having minimal moving parts.	Single wall extruded aluminum with small perforations	Single wall extruded aluminum with large perforations
			

PATTERNED CURTAIN			
	Description	530	535
	The patterned curtain is available using the 530 and 535 series in EntrexGuard. Clear anodized connector rods are used in between each slat. Curtain patterns we offer include clear, brick, straight, and window.	Clear polycarbonate / aluminum with curved design	Clear polycarbonate / aluminum with straight design

BOTTOM BAR SIZING		
Description	HD Bottom Bar	Bottom Bar Plates
The EntrexGuard system is compatible with the Heavy Duty Bottom Bar (two sizes). When used on the EntrexGuard system, these bottom bars are compatible with our bottom bar plates to cover the ceiling opening.	3 in (75 mm) 4 in (100 mm)	3 in (75 mm) 6 in (150 mm)

GUIDE RAIL SIZING			
Description	64 mm	83 mm	83 mm - AnchorLoc
There are two sizes of guide rails compatible with the EntrexGuard system. AnchorLoc provides the ultimate strength and stability, with end retention securing the curtain to each guide rail.	2.5 in (64 mm)	3.25 in (83 mm)	3.25 in (83 mm)

SHUTTER AND CURTAIN SIZING				
Slat Profiles	Guide Rail Sizes	Bottom Bar Sizes	Maximum Curtain Size	Maximum Curtain Area
530, 535, 560, 561, 562	2.5 in (64 mm), 3.25 in (83 mm), 3.25 in (83 mm) with AnchorLoc	Heavy Duty - 3 in (75 mm), Heavy Duty - 4 in (100 mm)	Width: Up to 300 in (7620 mm) Height: Up to 228 in (5791 mm)	250 sq. ft (23 sq. m)