

2717 STERLING

CONTEMPORARY COLLECTION

PERSONALIZING OPTIONS

GOOD / BETTER / **BEST**

COLORS¹

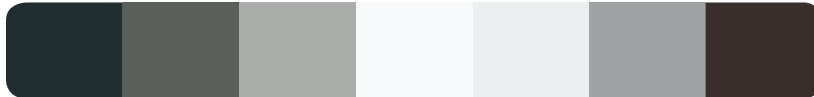


Deep Black Charcoal Slate Gray Almond



Bone White Sandstone Medium Bronze Hartford Green

CUSTOM COLORS¹



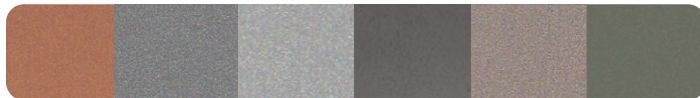
Matte Black Musket Gray Ash Gray Bright White Stone White Cityscape Mansard Brown



Burnished Slate Dark Bronze Classic Green Hemlock Green Teal Slate Blue Sierra Tan



Royal Blue Regal Red Colonial Red Burgundy Terra Cotta Galvalume Plus Western Rust



Copper Penny Weathered Zinc Silver Vintage Champagne Aged Copper

GLASS³

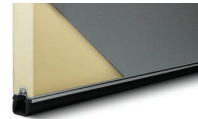


Tinted



Specifications

Panel Style	Flush
Section Construction	2" Thick - 2-Sided Steel
Section Material	24 ² Ga. Steel
Insulation Type	1-7/8" Polyurethane
R-value / Thermal Performance	R-15.07
Window Style	Infinity ⁴
Glass³	Non-Insulated
Warranty	5 Years on Sections 3 Years on Springs 6 Years on Hardware



¹ Refer to your local C.H.I. Dealer for exact color match. ² Lower steel gauge [ga.] number indicates stronger steel. ³ Glass sections are available with or without cutouts.

* Light transmission value of 14%. † Slight uneven surface on steel sections is not considered an imperfection.

Your Local Garage Door Professional